

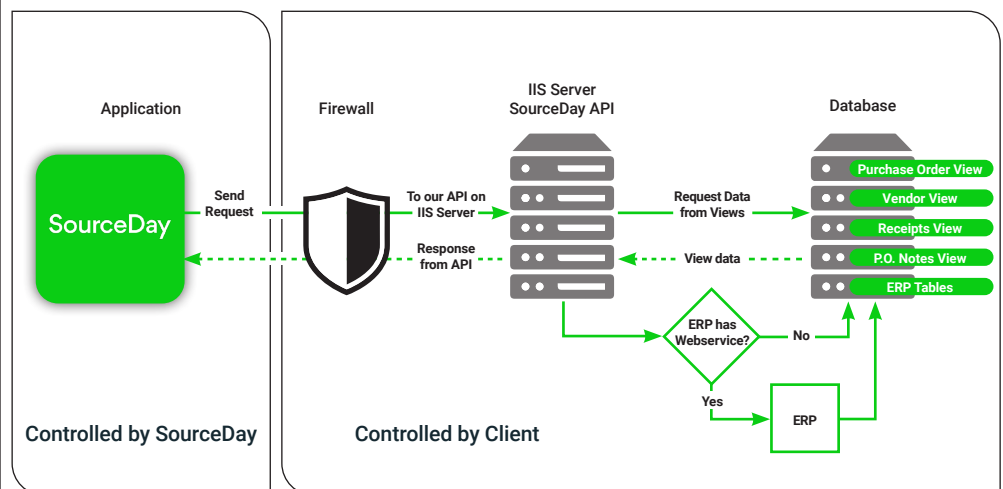
SourceDay ERP Integration

This SourceDay ERP Integration document provides an overview of the technical integration touch points for the SourceDay application and the requirements for integration. Use it to understand the expertise, technical resources, and engineering skills needed to make the SourceDay implementation smooth, quick, and successful.

High Level Data Flow

SourceDay's key value is to provide a collaboration platform with extended workflows that improve buyers and suppliers visibility into the data, leading to fewer risks, lower cost and better outcomes. To this end, SourceDay's application uses APIs to sync with the ERP to retrieve relevant data such as PO information, vendor information, etc. and makes the information available for collaboration. SourceDay can integrate with both On-Prem and Cloud ERPs. SourceDay's application can integrate with Cloud ERPs using IIS instances on SourceDay cloud infrastructure. SourceDay recommends using APIs for integration with your ERP system, however it can use other connection methodologies such as SOAP API or SQL Views as well.

The data flow diagram between SourceDay application and an OnPrem ERP is shown below.



» System Integration Points

There are three integration points where SourceDay will require modification and assistance in configuring the SourceDay application to integrate with ERP:

- » ERP Database/Web services
- » Service Container (such as IIS Web Server)
- » Firewall

» ERP & Web Services Configuration

For the SourceDay application to request data from your ERP, you must create a database user for the Sourceday application and provide specific permissions to this user. Similarly, to interface with the ERP APIs (preferred method of integration), create an API user which has permissions to access PO data on the ERP. These steps will allow the SourceDay application to read and write data from the ERP using APIs.

» Service Container (IIS Web Server)

To integrate with On-Prem ERPs, SourceDay recommends IIS Web Server as a service container with Windows 2008 or higher, installed with .NET 4.5 Framework. SourceDay recommends enterprise grade hardware specification for the hardware hosting IIS Web Server. The IIS Web Server should allow installation of the SourceDay application as a .Net application and allow access to the client ERP system. To integrate with Cloud ERPs, SourceDay will host an IIS Server on SourceDay cloud to integrate with the client ERP system.

» Firewall Configuration

To allow for safe and secure communication between SourceDay and client ERP systems, the client must ensure that the server and IIS Web Server instance IP addresses are reachable on the public internet and that the SourceDay pilot and production environment (discussed below) IP addresses are allowed to access the web server.

» Workflow Discovery & Data Mapping

Not all ERPs are the same and some clients have invested in customizing their ERP to suit critical business requirements. As such, it is important for SourceDay to go through a discovery process that validates your organization's operability with our solution and determines what level of customizations exist that may impact SourceDay's ability to manage a client's purchase order data.

This area is critical and involves working with the procurement team to validate that the ERP data is mapped to the correct areas within the SourceDay application.

» SourceDay Application Installation, Deployment & Verification

When the Firewall, ERP Data/Web Services, and Service Container are complete and made available for SourceDay, the SourceDay application is installed. SourceDay then starts the validation process in the pilot environment for the sync of data, ensuring changes proposed and confirmed (supplier, buyer changes) in the SourceDay application can be successfully pushed into the client's ERP.

To ensure data integrity and avoid business disruption, SourceDay requires a minimum of two deployment environments to complete the integration:

- » **Pilot Environment for the IIS instance and the ERP which is not production.**
- » **Production Environment for the IIS instance and the ERP which is in production.**

In certain cases, a customer will deploy both the Pilot and Production environments on the same IIS instance mapped to different HTTPS ports. This configuration also works, so long as there is a Pilot and Production ERP available for each API/Integration to be configured, respectively.

When installing and configuring the integration, we require all testing to be completed in a Pilot environment with non-production data before we promote the integration to your Production environment. After we have verified all of the data syncs, processes, and updates correctly in Pilot, only then we apply the same installation and configuration steps in Production and designate the appropriate seeded data to operate on.

Once this is complete SourceDay will then begin the on-boarding of your Buyer staff and the suppliers that you have chosen to use the SourceDay platform.

» SourceDay and ERP Data Exchange

The SourceDay application synchronizes with your ERP, using APIs to retrieve relevant data such as PO information, vendor information, etc. The SourceDay system retrieves data at specific frequencies depending on the importance of the data for your business. For instance, Purchase Order and Vendor information is synchronized every 15 minutes whereas Receipt information is synchronized every 4 hours between SourceDay and your ERP. The updated information is then presented on the SourceDay application for collaboration.

The following tables show a snapshot of data retrieved and updated during synchronization between ERP and SourceDay application. This is not an exhaustive list.

Purchase Order Info

PO Number	PO Line	Release	Vendor Info.
Unit of Measurement	Unit Cost	Quantity Ordered	Price
Purchase Order Status	Due date	PO Status	Shipping Info

Purchase Order Receipts Info

PO Number	PO Line	Release	Vendor Info.
Quantity Received	Received Date	Standard Cost	Received Item Cost

Vendor Info

Vendor Name	Email Address	Primary Contact	Primary Phone
Address, State, Zip	Country	Default Contact	

» Estimated Time for Work Activities

Below are the estimated timelines for key work activities, taking into account any internal team reviews, approvals, and change windows. The assumption is that there are resources available and the processes to implement changes within an organization are thorough, but not backlogged, which could introduce delays in implementing the changes required.

Some other variables that could affect estimated times is if the client has outsourced their IT work to 3rd parties.

Area	Estimated Actual Time
Firewall - Review, Approval, Configuration	1-5 business days
ERP Data/Web Services	5-10 business days
Service Container - Procurement, Install, Configuration	5-10 business days
Workflow Discovery/Data Mapping	5-10 business days
SourceDay Application Install/Verification	1-5 business days